

Walk Through Metal Detector

WMD318

18 Zones Standard



Features

- Eighteen (18) over-lapping detection zones with multiple alarms
- Sensitivity for each zone is adjustable in increments 0-255
- 5.7 inch (14.5 cm) LCD screen
- Infrared remote control
- Sound & LED alarms located on both sides clearly indicate precisely where metal is detected.
- Automatically counts people and alarms
- Secure operation. Only authorized personnel can access the control panel.
- Easy assembly: Ships with only 2 pieces, cables and 8 screws. Simple to follow instructions.
- Completely safe to operate and walk through. Harmless to heart pacemaker, pregnant women, magnetic storage media, etc.
- Durable fire-retardant construction
- No need for manual calibration. Unit runs self-diagnostics and re-calibrates with each power-on
- Modular design makes parts replacement and maintenance simple and easy.
- 4-8 hours backup battery (optional)

Specifications

Power Supply	85-264V AC
Working Temperature	-4 F to 122 F (-20° to +50° C)
Working Frequency	4-8 kHz
Standard External Size	87(H) x 32(W) x 23(D) inches (2200(H) x 800(W) x 580(D) millimeters)
Standard Internal Size	79(H) x 28(W) x 20(D) inches (2010(H) X 700(W)X 500(D) millimeters)
Package Size for Door Panels	89 x 26 x 10 inches (2260 X 650 X 260 millimeters) stored in one package
Package Size for Control Unit	31 x 15 x 10 inches (780 x 390 x 250 millimeters) stored in one package
Gross Weight	155 lbs (70 kg)

Application



Airport



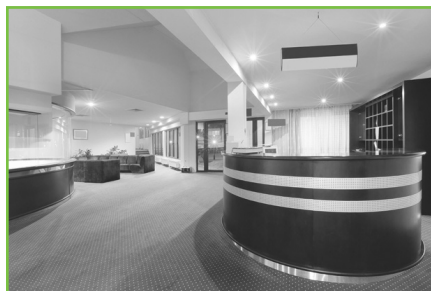
Government Office



Bank



Exhibition Center



Hotel



Prison

ZKTeco USA

1600 Union Hill Rd. Alpharetta, GA 30005
 Phone: (862) 505-2101 • Fax: (862) 204-5906 • sales@zktecousa.com • www.ZKTecoUSA.com

© Copyright 2016, ZKTeco Inc. ZKTeco Logo and ZKAccess Logo are registered trademarks of ZKTeco or a related company. All other product and company names mentioned are used for identification purposes only and may be the trademarks of their respective owners. All specifications are subject to change without notice. All rights reserved.

